

### Product Description

InsulWall® is a lightweight and structural insulated panel made from EPS-FR that is lined with a unique BlueScope® primed steel ready for third party coating systems such as a Dulux® Wash & Wear painted interiors and Dulux® Acratex® acrylic-render coated exteriors. InsulWall® is purpose designed to suit commercial applications as well as the residential housing, modular and renovation market. InsulWall® is available in thicknesses to suit 90mm interior walls and 140mm exterior walls and is available for use with the NCC CodeMark accredited InsulLiving® building system.

Panel Properties		
Panel Thickness (mm)	90	140
Typical Mass (kg/m <sup>2</sup> )	11.8	12.5
SL Grade Declared λ (W/m.K) at 23°C	0.042	0.042
SL Grade Declared R-value (m <sup>2</sup> K/W) at 23°C	2.15	3.40
SL Grade Total R-value (m <sup>2</sup> K/W) at 15°C (Winter)	2.41	3.66
SL Grade Total R-value (m <sup>2</sup> K/W) at 30°C (Summer)	2.29	3.48

Note: The Declared R-value is at 23°C in accordance with AS/NZS 4859.1:2018 & AS/NZS 4859.2:2018.

### Span Table

NON-CYCLONIC REGION A&B (WALL APPLICATIONS ONLY)

SL Grade EPS-FR Core / 0.6mm Steel Skins.

Maximum wall height / span (mm):	
Wind Class	Span (mm)
N2	5400
N3	4200
N4	3600

### Span Table

CYCLONIC REGION A&B (WALL APPLICATIONS ONLY)

SL Grade EPS-FR Core / 0.6mm Steel Skins.

Maximum wall height / span (mm):	
Wind Class	Span (mm)
C1	3600
C2	3000



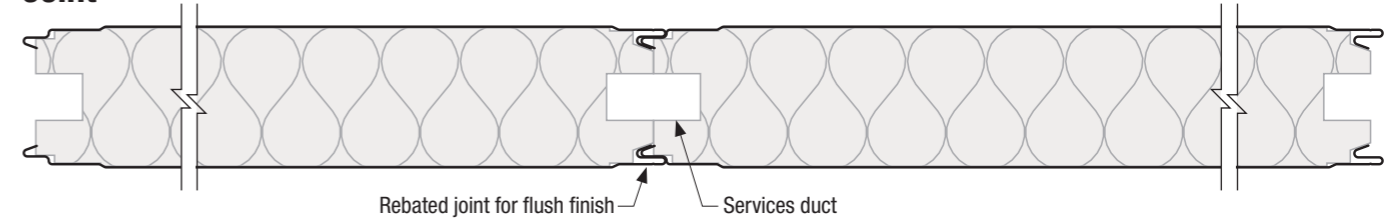
Core	EPS-FR (Expanded Polystyrene with fire retardant)
Width (cover mm)	1200
Thickness (mm)	90, 140
Length	Up to 16m (check for availability)
External Material	0.6mm G300 prime coated BlueScope® steel
External Finishes	Plain
Exterior Colour Options	External coating should strictly follow Dulux® DuSpec Specification. Dulux® Acratex® Coventry Coarse.
Internal Material	0.6mm G300 prime coated BlueScope® steel
Internal Finishes	Plain
Interior Colour Options	Internal coating should strictly follow Dulux® DuSpec Specification. Broad walls - Dulux® Wash & Wear 101 Adv L/G. Kitchens - Dulux® Wash & Wear Kitchen. Bathrooms - Dulux® Wash & Wear Bathroom L/G for wet areas
Paint System	AS/NZS 2728 & AS 1397
Acoustic Properties	Rw 24 - 25 depending on thickness
Bushfire Attack Level	BAL-40 (All exposed core to be covered with flashing)
Fire hazard properties	AS/NZS 1530.3
Ignitability Index	0
Spread of Flame Index	0
Heat Evolved Index	0
Smoke Index	2-3
SMOGR <sub>RC</sub>	< 100

The technical information contained in this document cover a breadth of applications where InsulWall® may be used, which may be outside the scope of our CodeMark certificate. Data specific to CodeMark certification can be found on InsulWall®'s CoC CM40033.

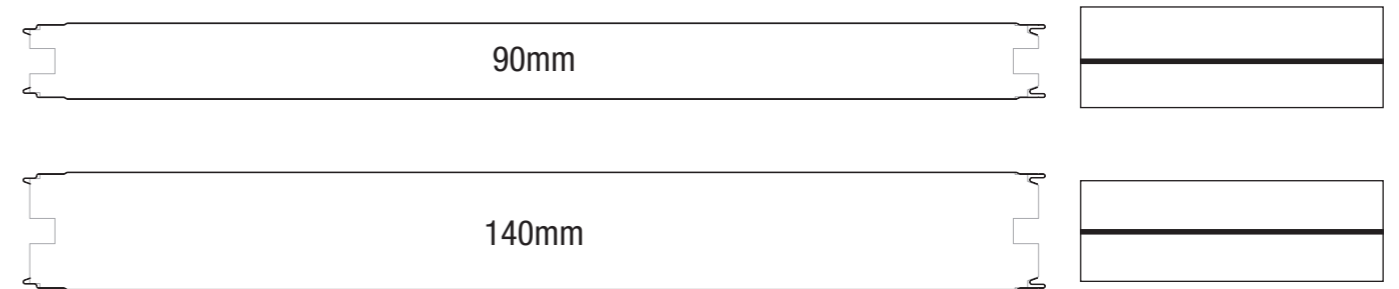
#### SPAN TABLE NOTES:

1. Wind speeds and coefficients based on AS 4055 - Wind Loads for Housing.
2. Serviceability deflection limit of span/150 has been allowed for.
3. Further information is available in the Technical Manual including: bracing capacity, axial load, support of cupboards and bracket loading.

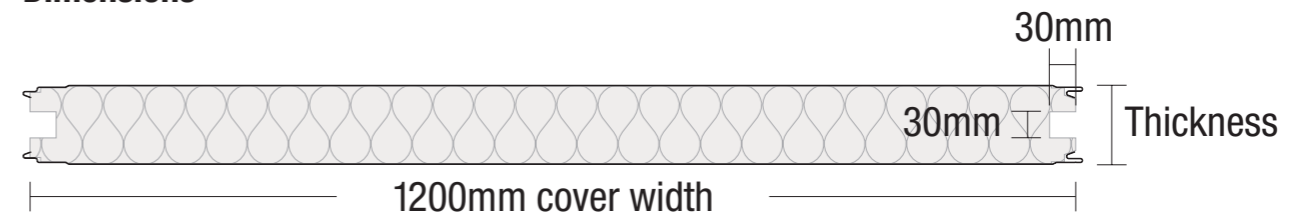
### Joint



### Profiles



### Dimensions



### Bondor® National Network

BRISBANE / EXPORT  
103 Ingram Road  
Acacia Ridge QLD 4110  
T: 07 3323 8500  
F: 07 3323 8501

PERTH  
17 Gauge Circuit  
Canning Vale WA 6155  
T: 08 9256 0600  
F: 08 9256 0620

MELBOURNE  
6 Dunmore Drive  
Truganina VIC 3029  
T: 03 8326 8000  
F: 03 8326 8099

ADELAIDE  
70 - 72 Rundle Road  
Salisbury South SA 5106  
T: 08 8282 5000  
F: 08 8282 5099

SYDNEY  
49 - 53 Newton Road  
Wetherill Park NSW 2164  
T: 02 9609 0888  
F: 02 9729 1114

LAUNCESTON  
7 Connector Park Drive  
Kings Meadows TAS 7249  
T: 03 6335 8500  
F: 03 6335 8544

To connect to your nearest Bondor® branch simply call 1300 300 099 or visit [www.bondor.com.au](http://www.bondor.com.au)

Metecno Pty Limited. ABN 44 096 402 934. The manufacturer reserves the right to change the specification without notice. Bondor®, Equitilt®, BondorPanel®, FlameGuard®, MetecnoPanel®, MetecnoInspire®, EconoClad®, MetecnoKasset®, InsulWall®, LuxeWall®, DesignerWall®, SolarSpan®, InsulRoof®, MetecnoSpan®, Purline®, CoolRoof®, Equideck®, InsulLiving®, Metecno are trademarks of Metecno Pty Limited. BlueScope, COLORBOND® Intramax™ and colour names are trademarks of BlueScope Steel Limited. The colours shown in this publication have been reproduced to represent actual product colours as accurately as possible. However, given printing limitations, we recommend checking your chosen colour against an actual sample before placing orders. This advice is of a general nature only. Designers must provide for adequate structural performance and other Building Code requirements. This information is subject to change. Refer to Bondor® website for latest version. Consult Bondor® for your application.



Leaders in Thermal & Architectural Building Solutions