

### Product Description

InsulWall® is a lightweight and structural insulated panel made from EPS-FR that is lined with a unique BlueScope® primed steel ready for third party coating systems such as a Dulux® Wash & Wear painted interiors and Dulux® Acratex® acrylic-render coated exteriors. InsulWall® is purpose designed to suit commercial applications as well as the residential housing, modular and renovation market. InsulWall® is available in thicknesses to suit 90mm interior walls and 140mm exterior walls and is available for use with the NCC CodeMark accredited InsulLiving® building system.

Panel Properties		
Panel Thickness (mm)	90	140
Mass (kg/m <sup>2</sup> )	11.8	12.5
SL Grade Total R-value (m <sup>2</sup> K/W)	2.4	3.7
Note: The above Total R-values are for insulation average temperature of 15°C. Contact us for other temperatures and different EPS-FR core grades.		

### Span Table

NON-CYCLONIC REGION A&B (WALL APPLICATIONS ONLY)

SL Grade EPS-FR Core / 0.6mm Steel Skins.

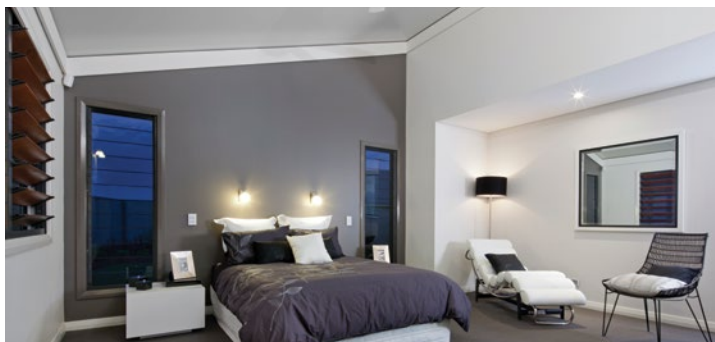
Maximum wall height / span (mm):	
Wind Class	Span (mm)
N2	5400
N3	4200
N4	3600

### Span Table

CYCLONIC REGION A&B (WALL APPLICATIONS ONLY)

SL Grade EPS-FR Core / 0.6mm Steel Skins.

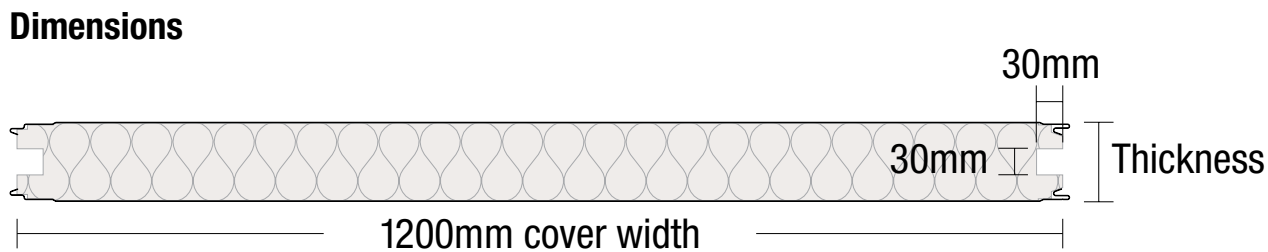
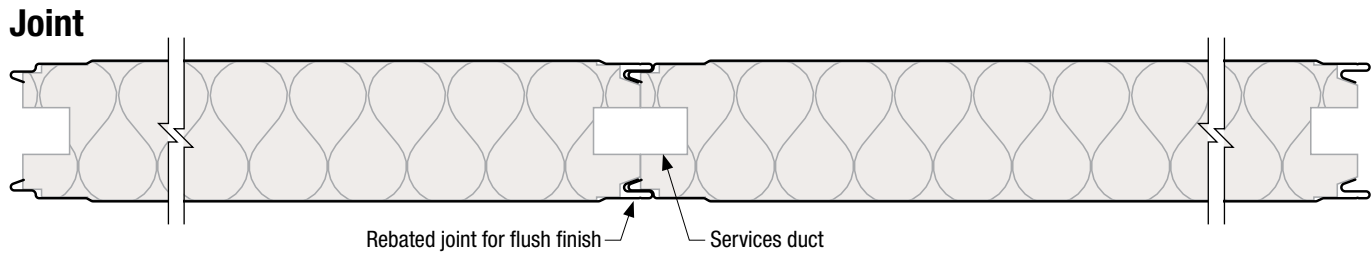
Maximum wall height / span (mm):	
Wind Class	Span (mm)
C1	3600
C2	3000



Core	EPS-FR (Expanded Polystyrene with fire retardant)
Width (cover mm)	1200
Thickness (mm)	90, 140
Length	Up to 16m (check for availability)
External Material	0.6mm G300 prime coated BlueScope® steel
External Finishes	Plain
Exterior Colour Options	External coating should strictly follow Dulux® DuSpec Specification. Dulux® Acratex® Coventry Coarse.
Internal Material	0.6mm G300 prime coated BlueScope® steel
Internal Finishes	Plain
Interior Colour Options	Internal coating should strictly follow Dulux® DuSpec Specification. Broad walls - Dulux® Wash & Wear 101 Adv L/G. Kitchens - Dulux® Wash & Wear Kitchen. Bathrooms - Dulux® Wash & Wear Bathroom L/G for wet areas
Paint System	AS/NZS 2728 & AS 1397
Accreditations	Codemark Certificate Number CM40033
Acoustic Properties	Rw 24 - 25 depending on thickness
Bushfire Attack Level	BAL-40
Fire hazard properties	AS/NZS 1530.3
Ignitability Index	0
Spread of Flame Index	0
Heat Evolved Index	0
Smoke Index	2-3

NOTES:

1. Wind speeds and coefficients based on AS 4055 - Wind Loads for Housing.
2. Serviceability deflection limit of span/150 has been allowed for.
3. Further information is available in the Technical Manual including: bracing capacity, axial load, support of cupboards and bracket loading.



### Bondor® National Network

**BRISBANE / EXPORT**  
103 Ingram Road  
Acacia Ridge QLD 4110  
T: 07 3323 8500  
F: 07 3323 8501

**MELBOURNE**  
329A St Albans Road  
Sunshine VIC 3020  
T: 03 8326 8000  
F: 03 8326 8099

**SYDNEY**  
49 – 53 Newton Road  
Wetherill Park NSW 2164  
T: 02 9609 0888  
F: 02 9729 1114

**PERTH**  
17 Gauge Circuit  
Canning Vale WA 6155  
T: 08 9256 0600  
F: 08 9256 0620

**ADELAIDE**  
70 – 72 Rundle Road  
Salisbury South SA 5106  
T: 08 8282 5000  
F: 08 8282 5099

**LAUNCESTON**  
7 Connector Park Drive  
Kings Meadows TAS 7249  
T: 03 6335 8500  
F: 03 6335 8544

To connect to your nearest Bondor® branch simply call 1300 300 099 or visit [www.bondor.com.au](http://www.bondor.com.au)